

The Kensey

Gwel Tregennow - No 51; An Lowarth - No 1, 4



An impressive three bedroom home offering the ideal space for a growing family. The ground floor offers a full length, double aspect kitchen dining room with French doors to the rear garden, the spacious sitting room also spans the full length of the house enjoying a double aspect and another set of French doors offering access to the rear garden. The first floor offers three double bedrooms, master with en-suite facilities and family bathroom. Externally this home enjoys off road parking, garage and enclosed rear garden.



Computer Generated Image



The Kensey

Gwel Tregennow - No 51; An Lowarth - No 1, 4



GROUND FLOOR

Entrance hall

Cloakroom

Lounge

3.35m (11'0") x 6.33m (20'9")

Kitchen / Dining

2.83m (9'3") x 5.65m (18'6")

FIRST FLOOR

Bedroom 1

2.83m (9'3") x 3.15m (10'4")

En suite

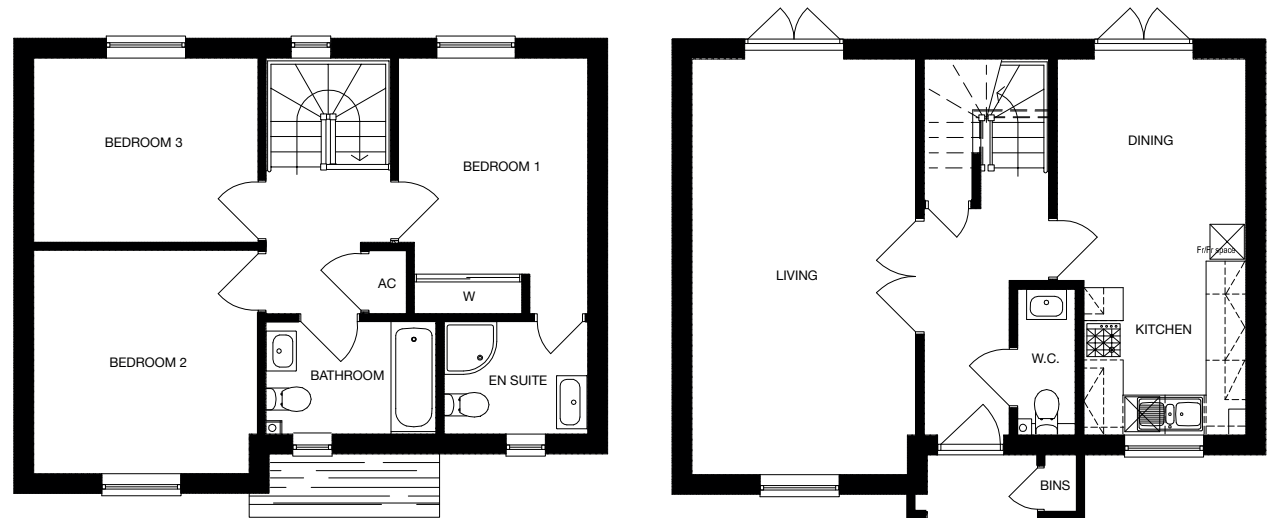
Bedroom 2

3.20m (10'6") x 3.45m (11'4")

Bedroom 3

3.40m (11'2") x 2.75m (9'0")

Bathroom



GROUND FLOOR

FIRST FLOOR

All measurements given are approximate, for further details please contact the agents. Dimensions given are done so in good faith and before construction has commenced. They are approximate and for guidance only and should not be used for furniture or appliance purchases. Purchasers are strongly advised to confirm actual dimensions when the property is nearing completion or is completed.

Tel. 01209 712121
bradleys-estate-agents.co.uk

