

Chy An Glas

Gwel Tregennow - No 54, 55



The Chy an Glas is a well-proportioned three bedroom home. The external appearance of this house combines render with timber effect cladding and an impressive window frontage. Inside, there's a bright and spacious lounge, a kitchen/dining room which overlooks the garden and a separate WC. On the first floor there is a master bedroom with two further bedrooms and a family bathroom. This stylish home is definitely one not to be missed.



Computer Generated Image



Chy An Glas

Gwel Tregennow - No 54, 55


Tregenna Lea

GROUND FLOOR:

Kitchen/Dining:

5.20m x 3.40m (17'1" x 11'2") max

Lounge:

3.05m x 4.75m (10'0" x 15'7") max

W/C

FIRST FLOOR:

Bedroom 1:

2.90m x 4.25m (9'6" x 13'11") max

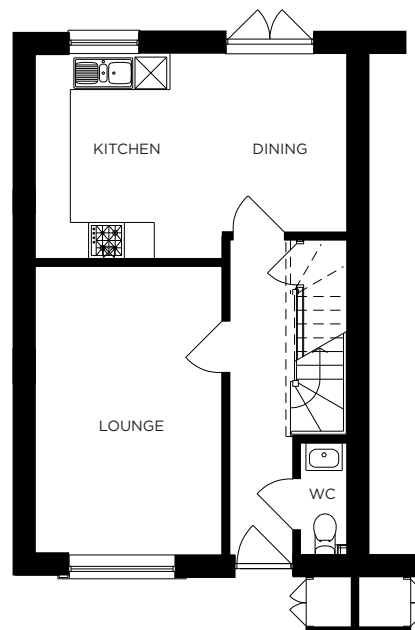
Bedroom 2:

2.77m x 3.20m (9'0" x 10'6") max

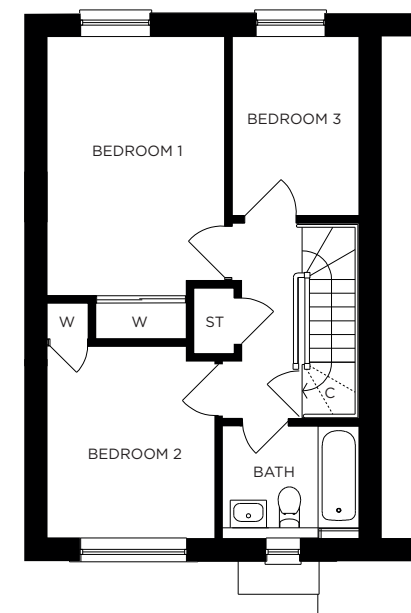
Bedroom 3:

2.11m x 2.90m (6'11" x 9'6") max

Bathroom:



GROUND FLOOR



FIRST FLOOR

All measurements given are approximate, for further details please contact the agents. Dimensions given are done so in good faith and before construction has commenced. They are approximate and for guidance only and should not be used for furniture or appliance purchases. Purchasers are strongly advised to confirm actual dimensions when the property is nearing completion or is completed.

Tel. 01209 712121
bradleys-estate-agents.co.uk


AKD
DEVELOPMENTS LIMITED


NHBC
Registered House Builder


ROBERTSON
DEVELOPMENTS LIMITED


Bradleys
ESTATE AGENTS