

# Chy An Glas

Gwel Fenten - No. 2

Park An Vownder - No. 2

Gwel Tregennow - No. 23 & 48

  
**Tregenna Lea**

The Chy an Glas is a well-proportioned three bedroom home. The external appearance of this house combines render with timber effect cladding and inside, there's a bright and spacious lounge, a kitchen/dining room which overlooks the garden and a separate WC. On the first floor there is a master bedroom with two further bedrooms and a family bathroom. This stylish home is definitely one not to be missed.



Computer Generated Image

# Chy An Glas

Gwel Fenten - No. 2

Park An Vownder - No. 2

Gwel Tregennow - No. 23 & 48



## GROUND FLOOR:

### Kitchen/Dining:

5.20m x 3.40m (17'1" x 11'2") max

### Lounge:

3.05m x 4.75m (10'0" x 15'7") max

### W/C

## FIRST FLOOR:

### Bedroom 1:

2.90m x 4.25m (9'6" x 13'11") max

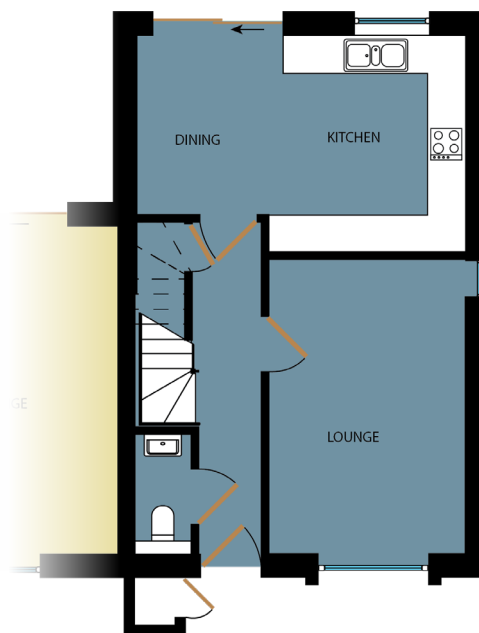
### Bedroom 2:

2.77m x 3.20m (9'0" x 10'6") max

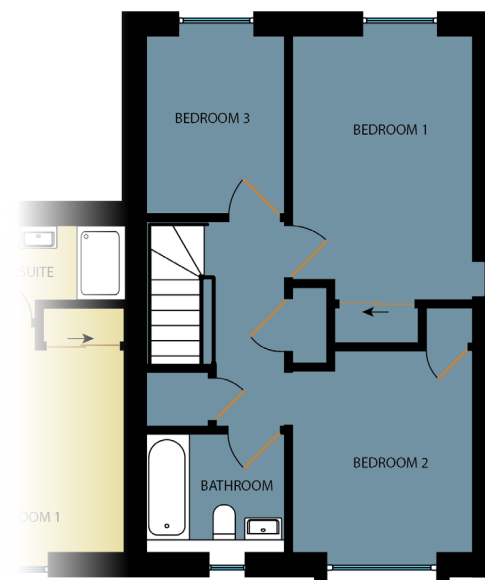
### Bedroom 3:

2.11m x 2.90m (6'11" x 9'6") max

### Bathroom:



GROUND FLOOR



FIRST FLOOR

All measurements given are approximate, for further details please contact the agents. Dimensions given are done so in good faith and before construction has commenced. They are approximate and for guidance only and should not be used for furniture or appliance purchases. Purchasers are strongly advised to confirm actual dimensions when the property is nearing completion or is completed.

Tel. 01209 712121  
bradleys-estate-agents.co.uk

