

The Trevarrack

Gwel Tregennow - No. 24, 25, 31, 32, 37, 38, 41 & 42



In similar style to the ever popular Chy-An-Glas, 4 bedroom 'Trevarrack' is also one of the most striking houses on the development.

The external appearance of this house combines granite stonework with timber effect cladding, render and a window frontage that spans two floors. Internally, on the ground floor there is a large kitchen/ dining room, lounge and ground floor WC. To the first floor are 4 bedrooms, master en suite facilities and family bathroom.

Externally, this home enjoys a garage, a driveway providing off road parking and an enclosed rear garden.



Computer Generated Image



The Trevarrack

Gwel Tregennow - No. 24, 25, 31, 32, 37, 38, 41 & 42


Tregenna Lea

GROUND FLOOR:

Kitchen/Dining:

6.00m x 3.95m (19'8" x 12'11")

Lounge:

5.05m x 3.45m (16'7" x 11'4") max

W/C

FIRST FLOOR:

Bedroom 1:

3.85m x 3.10m (12'7" x 10'2") max

Bedroom 2:

3.10m x 3.55m (10'2" x 11'8") max

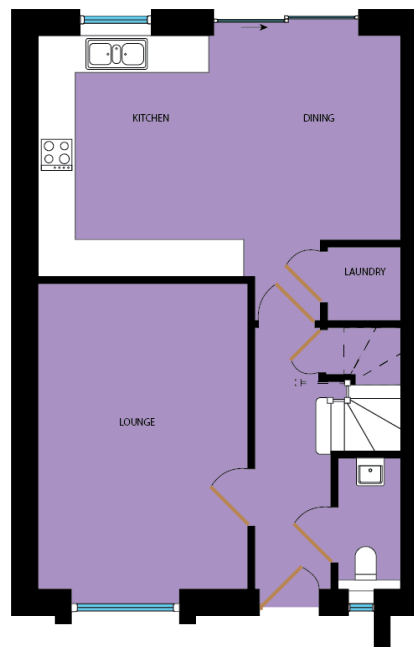
Bedroom 3:

2.75m x 2.47m (9'0" x 8'1") max

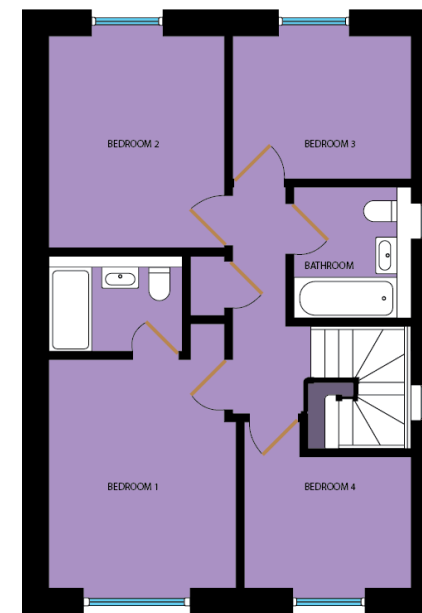
Bedroom 4:

2.75m x 2.15m (9'0" x 7'1") max

Bathroom:



GROUND FLOOR



FIRST FLOOR

All measurements given are approximate, for further details please contact the agents. Dimensions given are done so in good faith and before construction has commenced. They are approximate and for guidance only and should not be used for furniture or appliance purchases. Purchasers are strongly advised to confirm actual dimensions when the property is nearing completion or is completed.

Tel. 01209 712121
bradleys-estate-agents.co.uk


DEVELOPMENTS LIMITED


Registered House Builder


ROBERTSON
DEVELOPMENTS LIMITED


ESTATE AGENTS